

Upper St. Croix Lake - Our Local Treasure

An important question is being asked: What do I have to understand to take care of my lake?

Upper St. Croix Lake is an integral part of our community, and is much of what makes our community so unique and our lives so enjoyable.

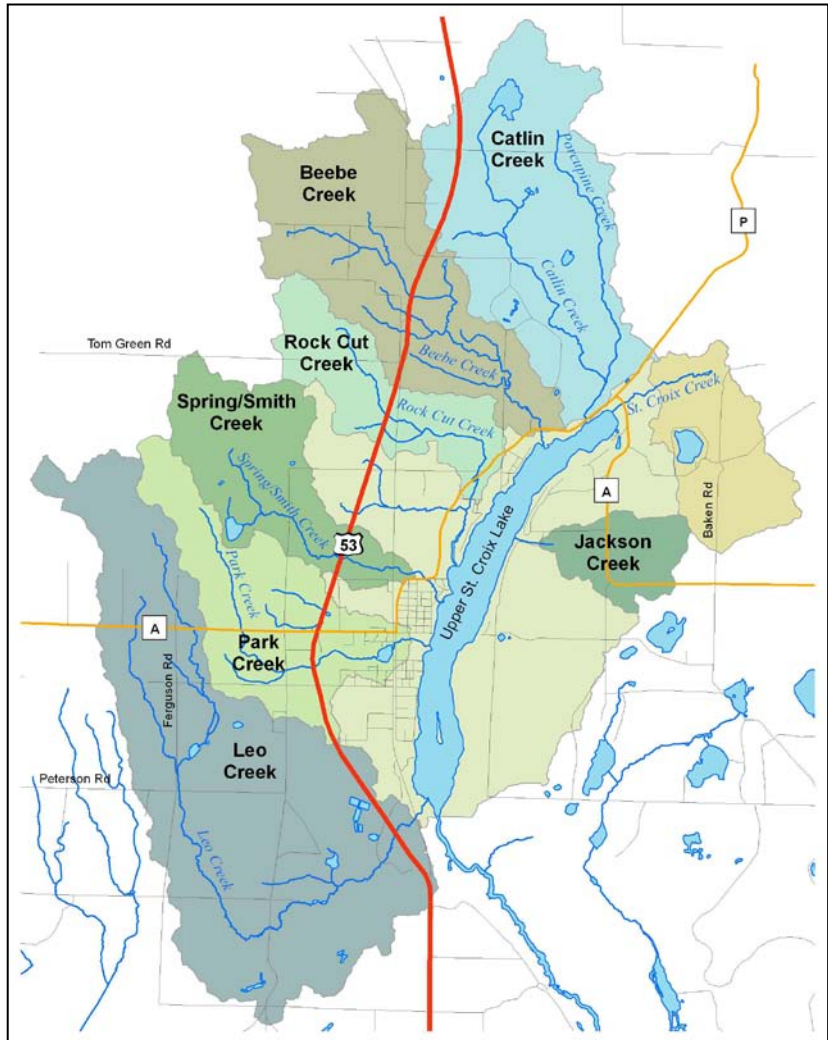
How's the lake doing? What challenges is it facing? Do we have aquatic invasive species present? Are problems with the municipal sewage system affecting the lake? Is storm water run-off coming down Main Street causing harm to the lake? Where does the lake's water come from? Why is the water-level of our lake quite stable when some of the surrounding area's lakes are dwindling in size?

An important part of this on-going discussion includes the streams that surround the lake, as they define the surface area draining into the lake. This area, shown at the right, is the lake's watershed -sometimes called its "lakeshed."

The Village of Solon Springs and much of the Town of Solon Springs are included in this area. The picture helps us to better understand that the lake's boundaries go far beyond its shoreline.

The Upper St. Croix Lake Advisory Committee, a group of local citizens, is thinking about the future of the lake and looking for answers to the questions raised above (plus many more). The Committee is also looking for opportunities to work with youth in our area, particularly during the summer months.

The public meetings of this Advisory Committee bring together different community perspectives, an understanding of the area's history and values, and some science from partnerships with universities, state agencies, county departments, and citizen-volunteer water-quality monitoring groups. The Advisory Committee will promote public stewardship of the waters in our lakeshed in cooperation with concerned citizens and the Village and Town Boards. This effort includes the streams shown in the picture as well as Park Pond.



Please forward suggestions and questions to Jim Heim at 378-4109 or jkheim@gmail.com.